

# How do I manage contractors and staff entering and exiting my vineyard?

## Cleaning and disinfecting footwear before entering a vineyard



Dilute fresh household bleach with water in a tub to make a solution. The required mix needs to be diluted 50% bleach, 50% water to effectively kill phylloxera. And check the label - the active ingredient needs to be sodium hypochlorite.



Scrub boots in clean water with a scrubbing brush to remove mud.



Soak and scrub boots in freshly prepared bleach solution for 60 seconds.



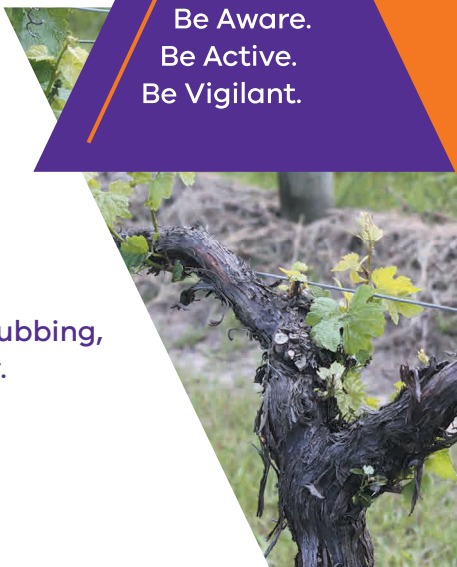
Do not rinse in water immediately following immersion in bleach solution because this reduces the impact of the bleach.

Repeat recommended scrubbing, when leaving the property.

# Phylloxera

## Stop the Spread!

Be Aware.  
Be Active.  
Be Vigilant.



Clothing and hats are high-risk carriers of phylloxera because these articles can come into contact with vines, so minimise the risk by providing disposable or dedicated on-site clothes for workers to wear where possible.



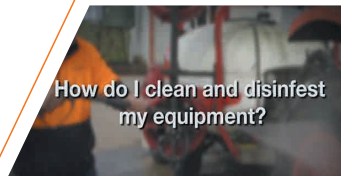
If disposable clothes are not used, ensure workers have a change of clothing between properties and clothing worn during work has been put through a hot wash in a washing machine at 50°C or higher with detergent before being used again. All clothing used in vineyards in PIZs and PRZs should be sealed in a plastic bag for transport. Infested clothing must not be transported to another property and then re-worn.



Clean small hand tools such as picking and pruning equipment in 50% bleach, 50% water solution for 60 seconds.



The education and training of staff and contractors is very important. Supply fact sheets and make the phylloxera training video readily available.



© The State of Victoria Department of Economic Development, Jobs, Transport & Resources, November 2016

This work is licensed under a Creative Commons Attribution 3.0 Australia licence. You are free to re-use the work under that licence, on the condition that you credit the State of Victoria as author. The licence does not apply to any images, photographs or branding, including the Victorian Coat of Arms, the Victorian Government logo and the Department of Economic Development, Jobs, Transport & Resources logo. To view a copy of this licence, visit <http://creativecommons.org/licenses/by/3.0/au/deed.en>

#### Accessibility

If you would like to receive this publication in an alternative format, please telephone the DEDJTR Customer Service Centre on 136 186, email [plant.standards@ecodev.vic.gov.au](mailto:plant.standards@ecodev.vic.gov.au) or via the National Relay Service on 133 677 [www.relayservice.com.au](http://www.relayservice.com.au). This document is also available on the internet at [www.agriculture.vic.gov.au/phylloxera](http://www.agriculture.vic.gov.au/phylloxera)

#### Disclaimer

This publication may be of assistance to you but the State of Victoria and its employees do not guarantee that the publication is without flaw of any kind or is wholly appropriate for your particular purposes and therefore disclaims all liability for any error, loss or other consequence which may arise from you relying on any information in this publication.

